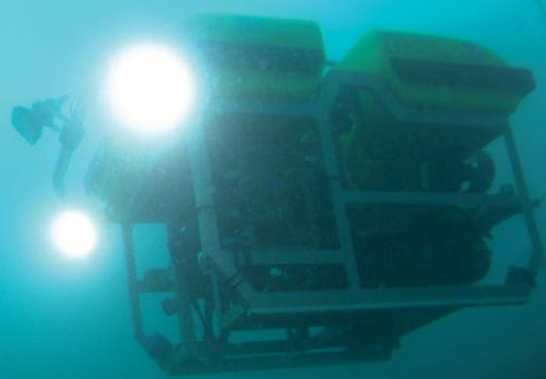




The
JASON
Project™

EXPLORATION COMMAND CENTERS



SEA
RESEARCH
FOUNDATION



NATIONAL
GEOGRAPHIC

WHERE KIDS CONNECT WITH SCIENCE

When Dr. Ballard's vessel of exploration, the *Nautilus*, is on scientific expeditions, it is in constant communication with shore-based researchers and support staff. The ship's remotely operated vehicles (ROVs) send a continuous stream of live video and data, and an intercom system allows for real-time voice communications.

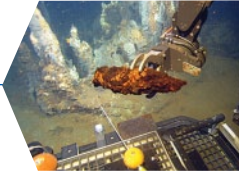
Exploration Command Centers (ECCs) extend this unique "mission control" experience to kids and other audiences. Multiple high-definition video feeds, exclusive live interactions with the *Nautilus* expedition team, and a year-round schedule of exciting science programming make ECCs the premier platform for live exploration. ECCs are suitable for use in theaters or as stand-alone major exhibits.



EXPLORATION COMMAND CENTER PACKAGE INCLUDES:

Exploration Programming

Join the *Nautilus* throughout the June – October expedition season. Access high-definition video, audio, and data from the ocean floor, speak with *Nautilus* team members, and stay up-to-date through *Nautilus* News programs. When the *Nautilus* is in port, tune in to JASON Live for year-round live interactive events and on-demand programs featuring top scientists from around the world.



Training & Resources

ECC interpreters receive two days of training at the University of Rhode Island's Inner Space Center, mission control for the *Nautilus*. Sessions include *Nautilus*' exploration and communications technologies, the science of deep ocean exploration, expedition team roles and careers, best practices for operating ECCs, communications protocols, integrating hands-on activities, and other workshops designed to make the most of the ECC experience.

Participants receive an ECC Technical Manual, an ECC Interpreter's Guide, and additional supporting materials and resources. ECC interpreters also have exclusive access to online tools and daily communications for behind-the-scenes information as the expedition unfolds.

Educator-at-Sea

The *Nautilus* integrates educators in all of its science expeditions, drawing from public, private, and charter schools as well as other youth-serving organizations. These educators are embedded in the *Nautilus*' scientific team at sea and ashore, serving as role models for *Nautilus* followers around the world. Every ECC site receives two berths for shipboard or shore-based interpreters.



Exploration Command Center Junior Watch Officer

Coming soon, high school students in advanced STEM courses can "stand watch" at an ECC and take a leadership role on the *Nautilus* during its voyages of exploration and discovery!

Technical Support

The JASON Project provides phone-based technical support for the live video receivers/decoders and interactive communication systems. ECC sites are responsible for supporting all other site-specific equipment and systems.

The ECC Technical Manual contains detailed specifications for standard equipment configuration and installation options. An ECC technical consultant is available to provide initial guidance and recommendations to support your site.

"All kids are born scientists and explorers, We just have to find ways to hook them, tap into that innate spirit, and keep them engaged."

Dr. Robert D. Ballard, Founder, *The JASON Project* and *Immersion Learning*



ECC System Requirements

- Broadband connectivity: Minimum 10 Mbps, recommended 15 Mbps or higher for optimum video quality, reliability, and overall experience
- 3 large, flat-panel monitors
- Speakers
- 3 HD video decoders
- 2 computers with monitors & peripherals
- Webcam & computer microphone
- Video, audio, and network cables

Approximate Cost: \$45,000 (does not include site-specific additions or customizations)

ECC Programming License

- Access to 12 months of *Nautilus* and JASON Live programming
- Exclusive opportunities for live interaction with scientists and explorers
- Two Educator-at-Sea or Educator-Ashore placements*
- Exclusive access to online interpreter community and behind-the-scenes expedition information
- Training for two ECC interpreters at annual *Nautilus* Live conference*
- All supporting guides, manuals and educational resources
- Live video and interactivity technical support

Annual cost: \$25,000

* Travel expenses not included